

[Material Data Sheet]

# C18150

## Chromium Zirconium Copper

### COMPOSITION % <sup>1</sup>

Cu	Balance
Cr	0.5 - 1.5
Zr	0.03 - 0.30
Fe	0.08 max
Si	0.1 max
Others	0.2 max total

### MECHANICAL PROPERTIES

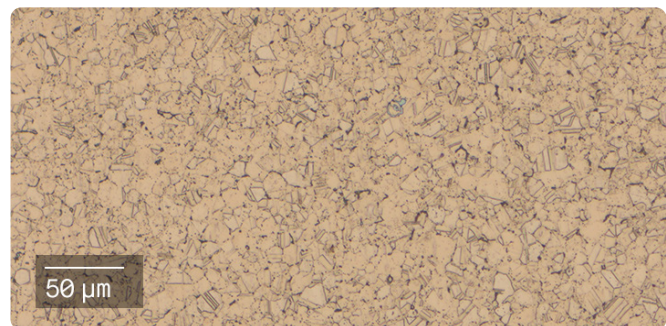
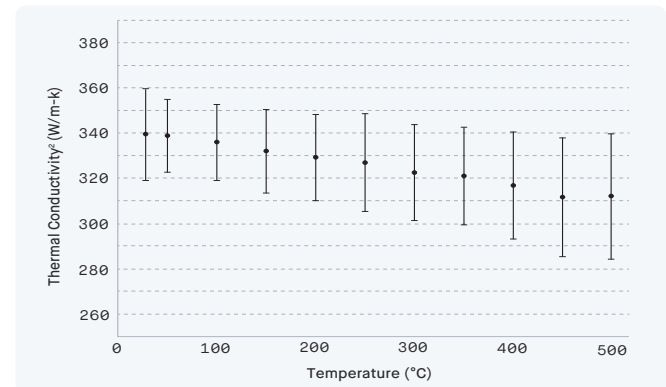
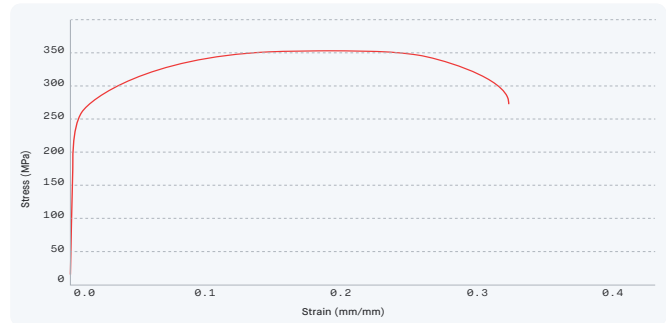
	Standard	Production System™ P-1 Heat Treated, Room Temperature Tested
Density (g/cc)	ASTM B311	<b>8.75 ± 0.06</b>
Density (%)	ASTM B311	<b>98.4 ± 0.7</b>
Hardness (HRB)	ASTM E18	<b>58 ± 2</b>
Yield Strength (MPa)	ASTM E8	<b>233 ± 7</b>
Ultimate Tensile Stress (MPa)	ASTM E8	<b>345 ± 8</b>
Elongation (%)	ASTM E8	<b>28 ± 4</b>
Electrical Conductivity (%IACS)	ASTM E1004	<b>87 ± 2</b>

### ATTRIBUTES & APPLICATIONS

- Excellent conductivity
- High strength and hardness
- Resistance to softening at elevated temperatures
- Welding electrodes
- Soldering guns

### OTHER STANDARD DESIGNATIONS

- CuCr1Z
- EN 12163 CW106C
- BS 2874 CC102



<sup>1</sup> Amounts are in wt% unless otherwise indicated.

<sup>2</sup> Thermal conductivity test performed in accordance with ASTM E1461